

## ZERO FATALITIES IS NOW ACHIEVABLE!

Forwood has created a proven global benchmark process in critical risk management (CRM). The industry-proven technology has been fine-tuned from more than 8.75 million hours of field testing in real work environments, by some of the largest high-risk operations across more than 30 countries.

### FORWOOD + ANORA IMPLEMENTATION PARTNERSHIP

*Delivering global benchmark critical risk management solutions*

#### IMPLEMENTATION PARTNERSHIP OVERVIEW

**Forwood's Critical Risk Management (CRM)** solution has grown over a 9-year period to create the world benchmark in fatality prevention. Forwood is an innovative safety company with a contemporary approach on accident causation. With growing demand, it was essential to partner with a trusted organisation with the same passion for safety and risk management.

Forwood and Anora both have a deep inherent commitment to risk management. This genuine passion for safety runs deep in the DNA of both organisations so it was natural for a partnership to form.

Anora specialises in deploying digital technologies to improve safety of employees and of other assets. Industry experience and expertise ranging from operations, design, project delivery as well as executive leadership, enables Anora to utilise a rare blend of skills, to methodically effect change when implementing solutions in the field.

Organisations can rest assured that a Forwood-Anora team will support their CRM deployments through each phase of their fatality elimination journey; from initial planning and embedding, to ongoing leadership coaching and sustainment.

#### VALUE PROPOSITION:

- ✓ Forwood Academy certified Coaches and CRM Champion level resources
- ✓ System based, near real-time visibility: "Your eyes in the field"
- ✓ Leading indicator analysis and reporting, for proactive Risk Management
- ✓ Reliable data collection tools - If you can *Measure* it, you can *Manage* it
- ✓ "Boots on the ground" - Local support providing multi-lingual capabilities
- ✓ Single source of "truth"

## CRM OVERVIEW

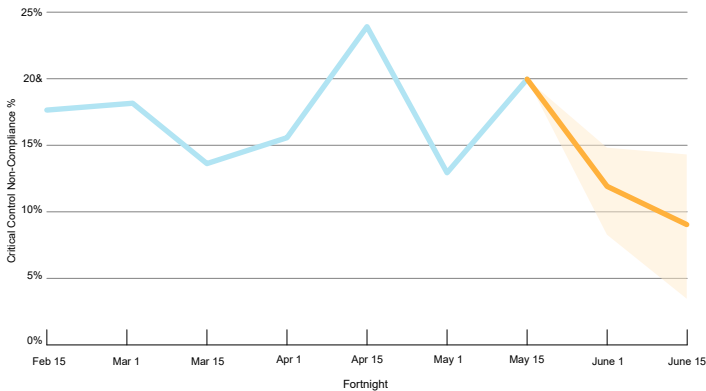
The Critical Risk Management (CRM) solution is a layered verification process focused solely on fatality elimination. At the foundation of CRM are 18 core critical risks; each of which present the potential for a fatality. The risks can be applied to multiple industries and are an important part of an organisation's visual and communication strategy.



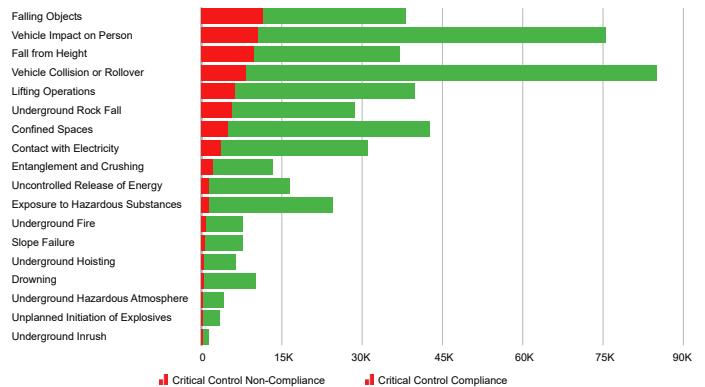
Standardised binary question sets have been recognised as a global benchmark in industry. Critical control checklists are applied at Manager, Supervisor and Operator/Maintainer levels giving 3 layers of protection against the same risk, mitigating the likelihood of a fatality occurring.

Millions of data points about the effectiveness of life-saving critical controls are collected within the CRM portal and are rapidly organised for deeper insights and more meaningful review. Using machine learning technology, Forwood's FAST Reporting tool can also predict where the next fatality is most likely to occur, so organisations can establish very targeted and effective safety campaigns.

Verification Non-Compliance % Forecast



Verification Volume (by Risk, Control, Site level, Verifier)



## CREDENTIALS

As partners with Forwood, Anora offer clients:



**Level 1:** SMEs supporting CRM Fundamentals entry-level training, suitable for all employees and contractors



**Level 2:** SMEs supporting CRM for Frontline Leaders and base Reporting, suitable for supervisors and team leaders



**Level 3:** SMEs supporting CRM for Site Management, advanced training suitable for senior managers and superintendents

## SAFETY CONSULTING SERVICES





## WHO IS FORWOOD?

Zero fatalities is now achievable through Forwood CRM. We are an innovative safety company with a contemporary approach on accident causation. Discontent with following traditional safety theories that continue to prove ineffective in preventing workplace fatalities; Forwood has now created a patented 3-tiered approach, supported by comprehensive content all leveraging advancements in technology to question, test and overthrow these longstanding thought patterns, forming completely new methodologies in safety.

These methodologies underpin Forwood's flagship product CRM, which through simple checklists and tools has assisted global organisations to 'break through the safety plateau' and achieve ground-breaking results. Early adopters of Forwood's CRM are attaining records in fatality prevention never before realised in the history of their operations.



## WHO IS ANORA?

Anora Technologies is a provider of end-to-end digital solutions to the industrial operators looking to satisfy regulatory compliance requirements as well as improve safety at their operations. Our solutions are distinctly differentiated by their simplicity, coupled with inbuilt security.

Anora focuses selectively on cutting-edge digital safety and environment management systems incorporating numerous monitoring tools into a single platform. Our user-friendly data collection tools are underpinned by tools familiar to the operators, supervisors and managers, leading to high level of product acceptance.

Our partnerships with industrial operators have enabled us to provide fit-for-purpose turnkey solutions which easily fit into your budget, maximising your time to value.



**Critical controls operationalised - from boardroom to shopfloor**



**i** For further details or to arrange a pilot please contact:

**Brad D. Wilson**

+1 615 610 7670 (USA)  
brad.w@forwoodsafety.com  
[www.forwoodsafety.com](http://www.forwoodsafety.com)

**Koketso Seripe**

+27 (0) 71 633 5665 (South Africa)  
koketso.seripe@anora.co.za  
[www.anora.co.za](http://www.anora.co.za)